

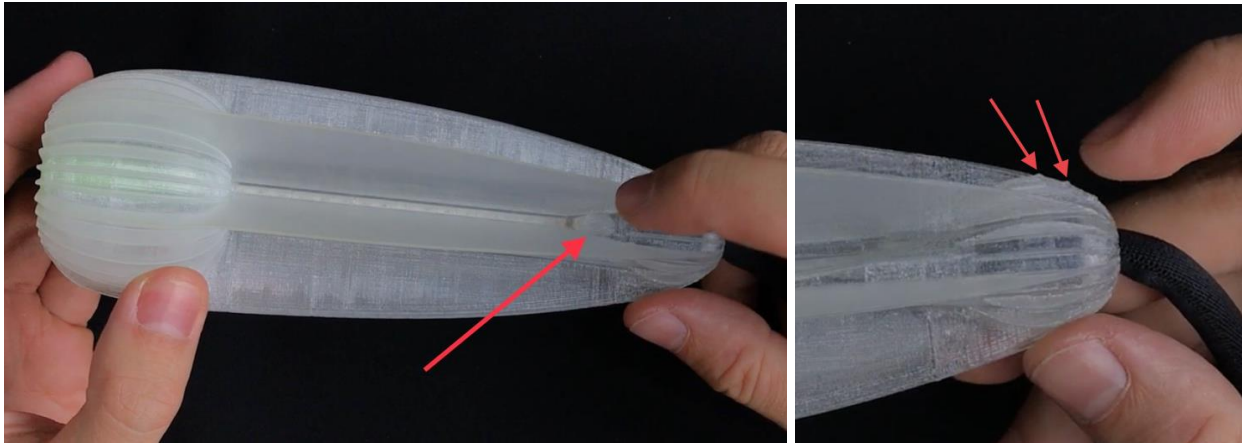
# Manual for LED digital poi Ignis Pixel JellyPoi

Dear customer!

Thank you for purchasing Ignis pixel poi. To make its lifetime as long as possible, as well as to keep the warranty valid, please read the instruction entirely and follow our advice.

## Controls

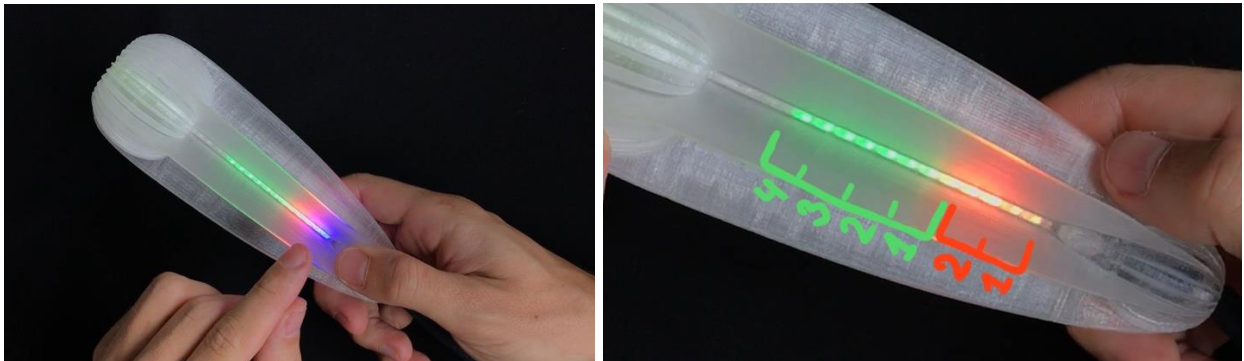
The only button to control Jellypoi is placed on the cord's side.



There are easy-to-feel little pimples on the rib opposite to the button, that makes you find the button easier.

Hold the button pushed for 3 seconds to turn on/off the poi.

After you turn on the JellyPoi, a timeline menu with a **blue** blinking cursor lights up.



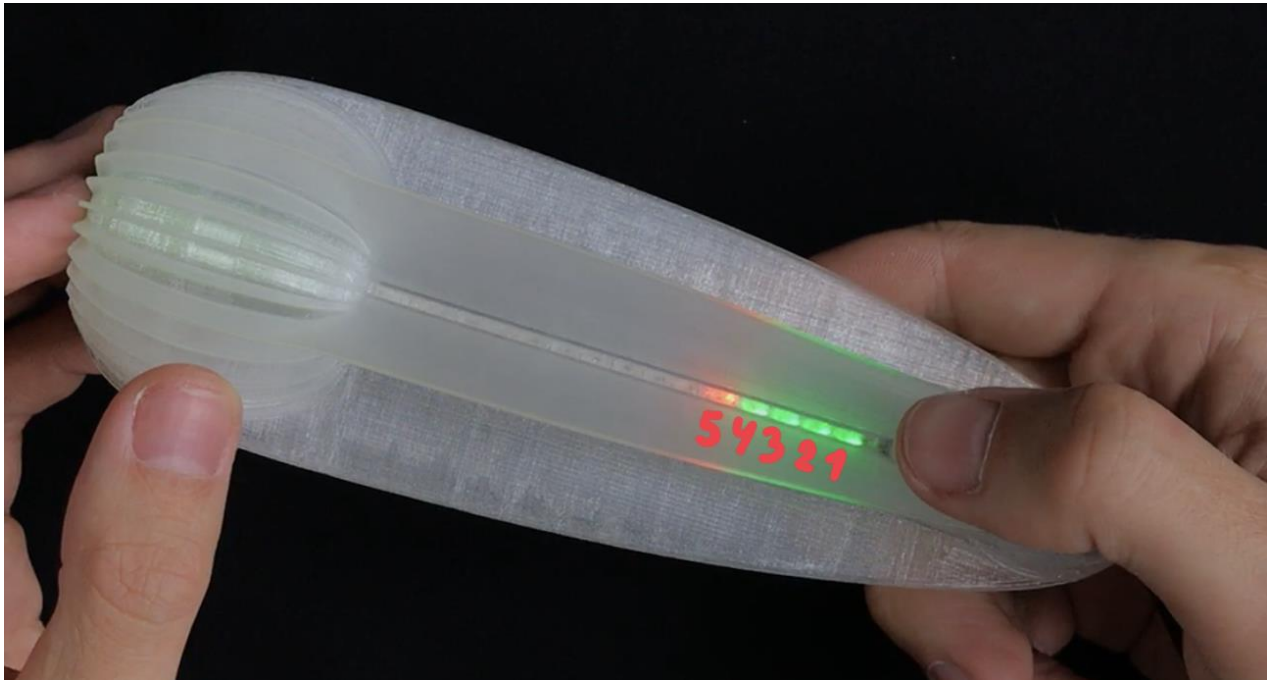
This menu consists of 2 preset timelines (the sequence of pictures) of **orange** color, and 4 custom timelines of **green** color:

**ORANGE 1.** Successive displaying of all loaded pictures for 4 seconds.

**ORANGE 2.** Random displaying of all loaded pictures for 4 seconds.

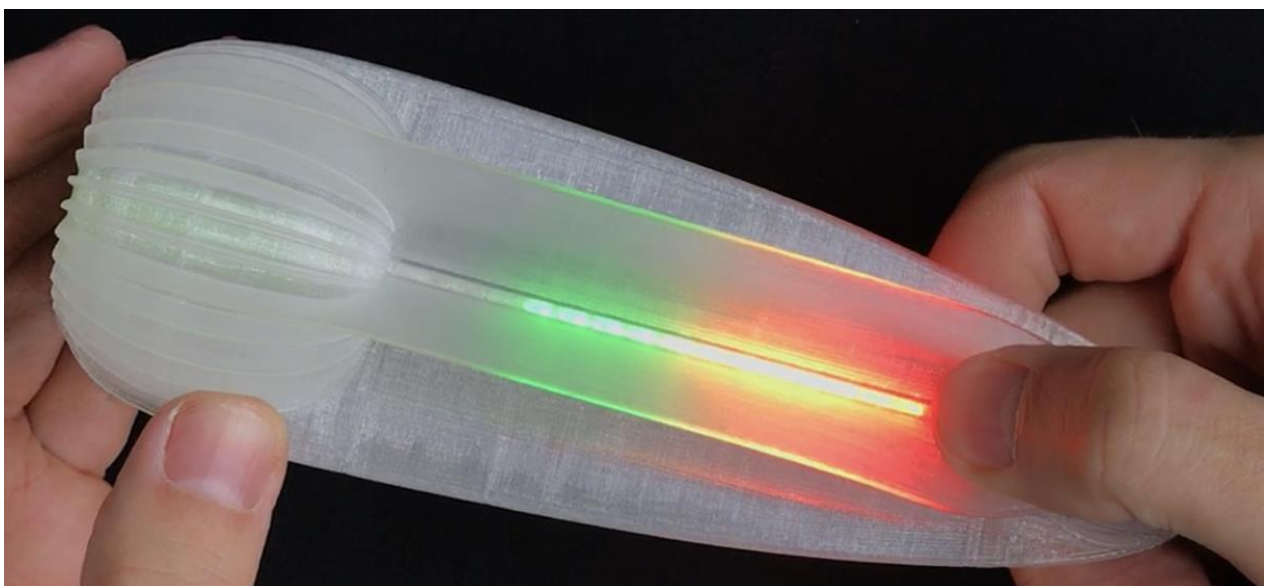
You can synchronize green custom timelines with your music in Ignis Pixel Utility (currently available for Windows-10. MacOS coming soon).

When you shift the cursor up above the timelines (**blue cursor**), there begins a row of 32 single images (**red cursor**). Single image mode can be useful, for example, for a photo session. On the photo below, the cursor is on 5<sup>th</sup> position.



### How to operate the control button

- Long push (3 seconds) **turns on/off** the poi.
- Press and hold the button for 0,4-0,8 sec **to shift the cursor up**. As soon as the cursor shifts up, release the button.
- Short push (less than 0,4 second) launches **the selected timeline/image**.
- **To return to the menu** from play mode, press and hold the button for more than 0,4 second (the delay protects from incidental presses when you spin the poi)
- Push the button for more than 0,8 second to see **the current battery level**:



After 10 minutes of inaction in menu mode, the poi automatically turns itself off.

In timeline/picture mode the poi works until the battery is discharged.

When the battery is low, the LEDs blink red for 10 seconds. To maintain the lifetime of the battery it's highly recommended to charge the Jellypoi the same day.

## Charging

- To charge the Jellypoi plug them to USB-charger or computer – you will see a red light. You can see the level of charge by position of the red light. On the figure below the position of the red light roughly shows 30% charge.



When the poi is on charge, the red light slowly moves towards the end of the poi. When the poi is completely charged, the light finally turns green.

- Lithium batteries don't have a memory effect, that is why we recommend to charge the poi every time after using them; don't wait till they are totally discharged. If you charge the poi every time, it makes the lifetime of the battery longer.
- **Avoid deep discharge of your digital poi!** Otherwise, it may result in loss of battery capacity and reduction of working time.

## Bluetooth connection JellyPoi to a cellphone

Pictures can be uploaded into JellyPoi only by Bluetooth through Ignis mobile Application. Currently works on Android. Download the Application here:

<https://play.google.com/store/apps/details?id=com.ignispixel>

Or just input Ignis Pixel in Google Play.

## Temperature recommendations

- Operating temperature to keep and use pixel equipment is from -20°C to 50°C (from -4°F to 122°F). On low temperature, the time of working can be diminished due to reduced battery capacity when a battery is kept on cold. When you come back to room temperature, all characteristics get back to the former level.
- If you really need to perform in the freezing cold, keep the poi in a warm place and take them right before the show. In this case, the batteries don't have enough time to cool off, and the working time remains almost the same.
- Selfheating by bright modes can also be used when performing in the cold – it doesn't allow the battery to freeze during the performance.

## Warranty

We give 2-year warranty for our pixel equipment. If during this time some defect or malfunction comes out, we either fix it or make a free replacement of a faulty element. All shipping charges are laid upon a customer, except cases when a device came initially defected or a failure was revealed right after using the device.

Ignis pixel equipment is strong enough to survive collisions on normal spinning speed (about 2 revs per sec). Anyway, it cannot be called indestructible. Warranty does not cover damages caused by hard collisions, drops, and water.

Estimated lifetime of Ignis Pixel equipment is 5-10 years and limited only by battery life (like in mobile phones). If the battery becomes worthless, get in touch with us to replace it with a new one, or we can tell how to change it by yourself.

If the equipment shows any failure, first and foremost reach us out by email **support@ignispixel.com** and tell what happened. In most cases, a failure is possible to fix on place, without sending back to us – this will save you a lot of time and money to send it to and fro.

It's really important for us to know all weak spots of our equipment so we could make it even more reliable and durable. We would appreciate if thus you help us to evolve.

To get in touch with us and ask questions about the props, go to contacts area on our website:

<https://ignispixel.com/contacts>

email: **pixel@ignispixel.com**

*kindest regards,*

*Ignis team*